

Grade 2 Math Unit 4 Pre Assessment

1. MGSE2.NBT.6 (DOK 1)

Jasmine read a book for 63 minutes in the morning. After lunch, she read for 72 minutes. Before she went to bed, she read for 48 minutes. How many minutes did Jasmine read altogether?

- A.** 120 minutes
- B.** 135 minutes
- C.** 173 minutes
- D.** 183 minutes

Answer: .They are the same, 59; you can add any 2 numbers in any order

2. MGSE2.NBT.6 (DOK 2)

Walter and Joann are solving $35 + 24$.

Walter writes his problem:

$$\begin{array}{r} 35 \\ + 24 \\ \hline \end{array}$$

Joann writes her problem:

$$\begin{array}{r} 24 \\ + 35 \\ \hline \end{array}$$

Are their answers the same or different? Why or why not?

Answer: .She bought a dress and ring.

3. MGSE2.NBT.6 (DOK 2)

The chart below lists items on sale at a store.

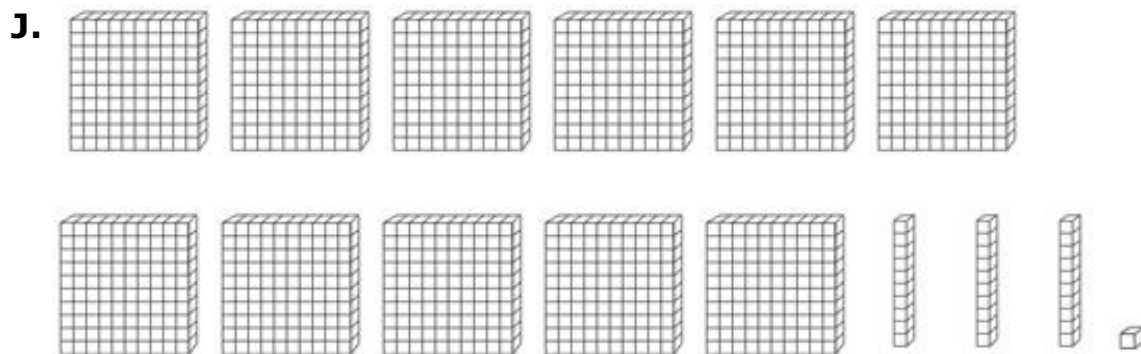
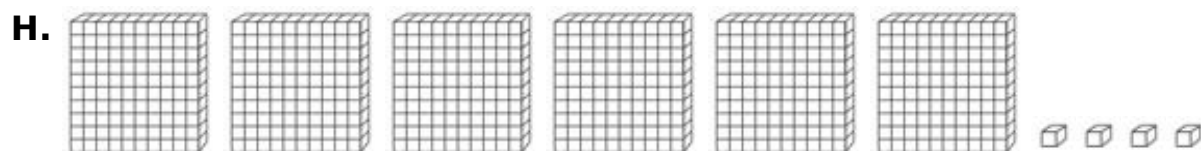
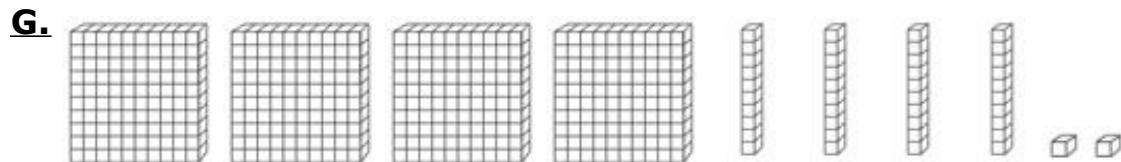
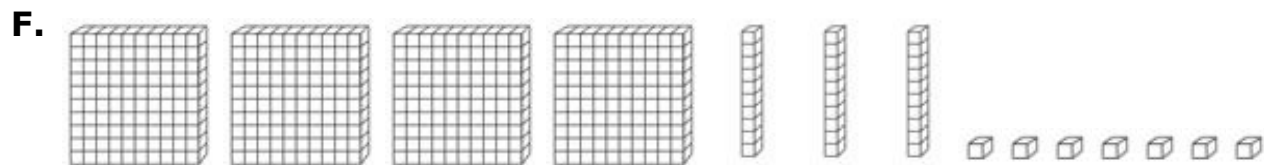
Item	Cost
Purse	\$44
Dress	\$63
Skirt	\$32
Ring	\$78

Lucy wants to buy two items which total \$141. Which items does she want to buy?

4. MGSE2.NBT.7 (DOK 2)

Marcus is using place value blocks to model numbers.

He has 784 baseball cards. He sold 347 of them in the garage sale. How many cards does he have left?



Answer: 198 more people went to the museum in August than in June. $486 - 288 = 198$

5. MGSE2.NBT.7 (DOK 2)

The table below lists the number of people who went to the museum from June through August.

June	July	August
288	595	486

a) How many more people went to the museum in August than in June?

b) Write an equation to check your answer.

Answer: $486 + 109 = 595$. There is an inverse relationship between addition and subtraction.

6. MGSE2.NBT.7 (DOK 3)

The table below lists the number of people who went to the museum from June through August.

June	July	August
288	595	486

If 109 more people went to the museum in July than in August, what addition sentence can you use to check your answer? Explain.

Answer: 100

7. MGSE2.NBT.8 (DOK 1)

$$765 - \square = 665$$

What number correctly goes in the box \square ?

Answer: .Her grandmother bought 10 stamps.

8. MGSE2.NBT.8 (DOK 2)

Natalie collects stamps. She had 187 stamps in her collection. While on vacation in Europe, her grandmother bought her some stamps from France and Italy. She now has 207 stamps.

If 10 stamps were bought in France, how many stamps did her grandmother buy in Italy?

9. MGSE2.NBT.8 (DOK 3)

What is the correct reason and answer to the following problem?

678 + 10

- A.** Because 10 is subtracted from the hundreds, the answer is 578.
 - B.** Because 10 is subtracted from the tens, the answer is 668.
 - C.** Because 10 is added to the tens, the answer is 688.
 - D.** Because 10 is added to the hundreds, the answer is 778.
-

10. MGSE2.NBT.9 (DOK 1)

One of your classmates solved the following problem:

$$\begin{array}{r} 75 \\ - 32 \\ \hline \end{array}$$

First, the student subtracted 2 ones from 5 ones. What should the student subtract next?

- F.** 2 ones from 7 tens
 - G.** 3 tens from 5 ones
 - H.** 3 tens from 7 tens
 - J.** 5 ones from 7 tens
-

11. MGSE2.NBT.9 (DOK 2)

Connie was asked to solve the problem $423 - 141$. The answer she gave is 282. Which of the following is a true statement about Connie's answer?

- A.** Connie's answer is incorrect because she regrouped the ones but not the tens.
 - B.** Connie's answer is incorrect because she regrouped the tens but not the ones.
 - C.** Connie's answer is correct because she regrouped the tens and the hundreds.
 - D.** Connie's answer is correct because she regrouped the ones and the tens.
-

Answer: .Answer is 523. Explanations will vary.

12. MGSE2.NBT.9 (DOK 2)

Solve the equation below and explain the steps you used to solve.

$$347 + 176$$

Answer: .He has 73 cents in his piggy bank.

13. MGSE2.MD.8 (DOK 1)

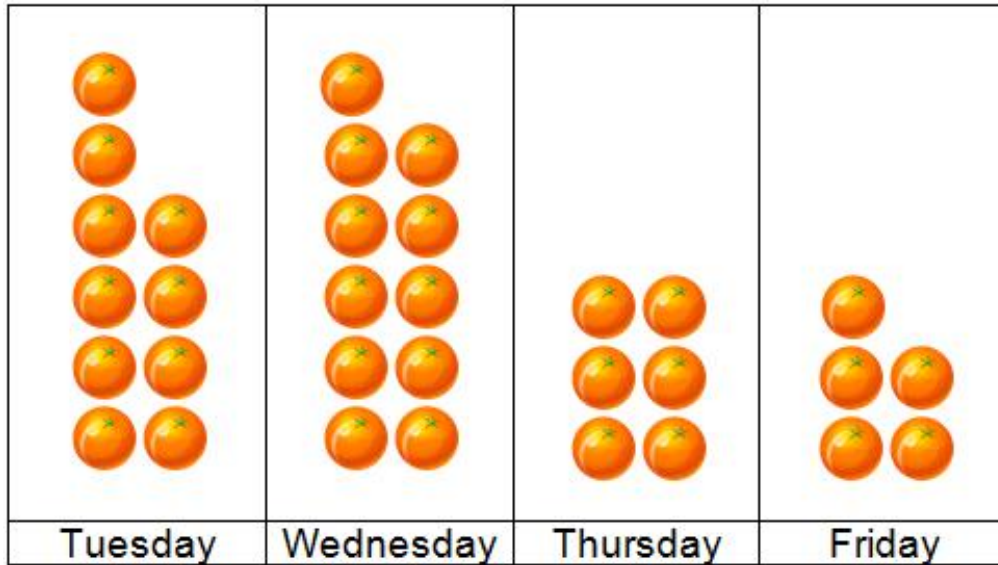
Terrance has the following amount of money in his piggy bank.



How much money does Terrance have?

14. MGSE2.MD.8 | MGSE2.MD.10 (DOK 2)

The graph below shows the number of oranges sold at the store.



Each  costs 25 cents.

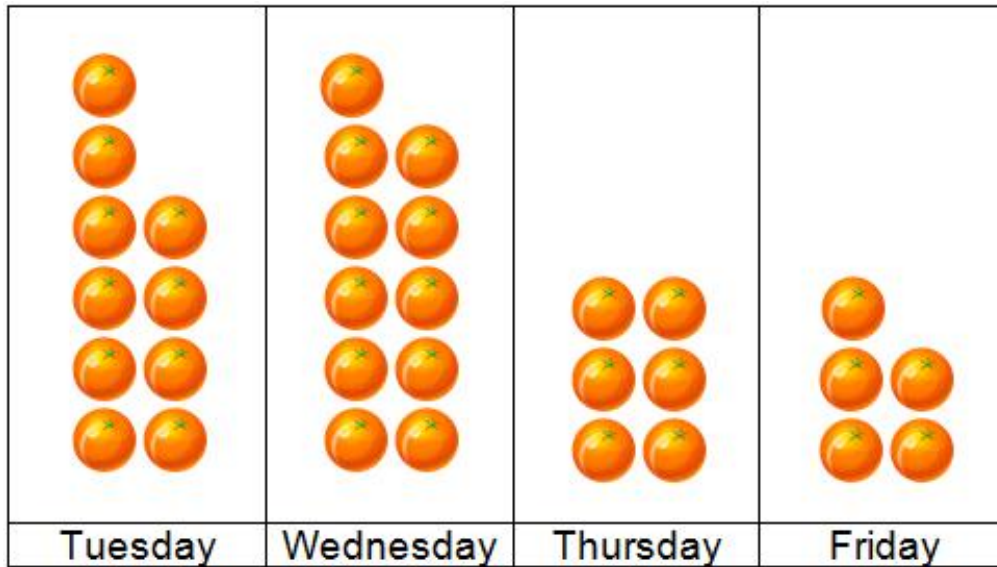
Ms. Silva has 4 quarters, 3 nickels, and 10 pennies. On which day did she buy oranges?

- F. Tuesday
- G. Wednesday
- H. Thursday
- J. Friday

Answer: .She pays 25 cents more

15. MGSE2.MD.8 | MGSE2.MD.10 (DOK 2)

The graph below shows the number of oranges sold at the store.



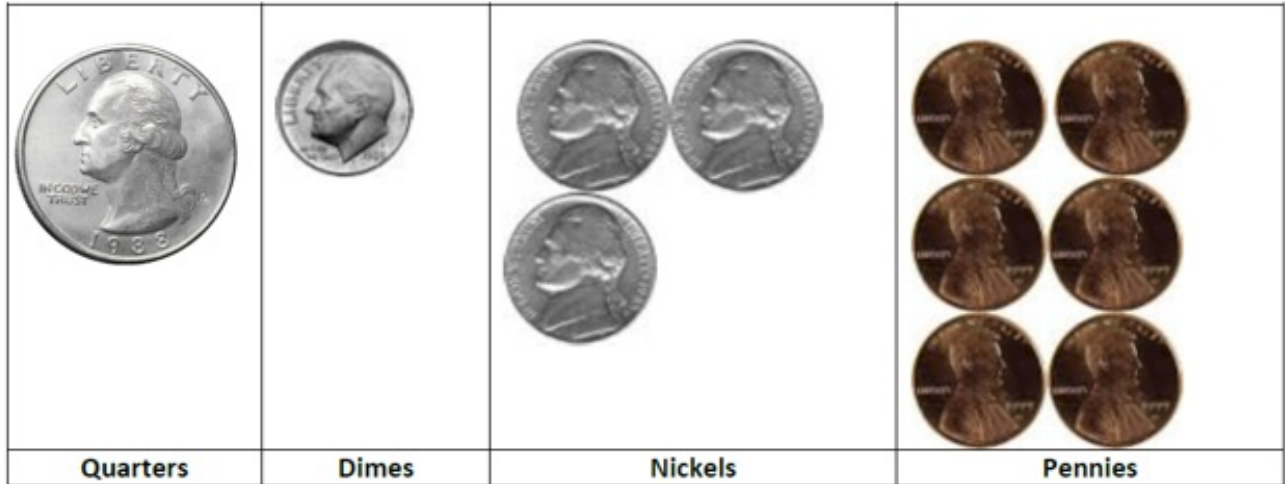
Each  costs 25 cents.

Ms. Scott buys oranges on Tuesday and Wednesday. How much more did she spend on Wednesday than Tuesday?

Answer: .She has \$0.56

16. MGSE2.MD.10 (DOK 2)

Sally drew a pictograph of the coins in her piggy bank. How much money does she have?



Answer: The nickels and dimes have a value of \$0.25

The nickels and dimes together have the same value as the one quarter.

17. MGSE2.MD.10 (DOK 3)

Sally drew a pictograph of the coins in her piggy bank. What value is shown by the nickels and dimes in the pictograph?

How does that value compare to the value from the quarter column? Explain.

